





EARTH DAY WORD SEARCH



CAN YOU FIND ALL 16 WORDS
RELATED TO EARTH DAY IN THE PUZZLE BELOW?

R	V	S	N	D	L	V	P	D	E	Q	A	P	E
T	E	F	T	A	U	L	E	T	A	M	I	L	C
Y	G	S	B	N	A	E	L	D	W	G	H	T	U
K	R	O	O	S	A	N	A	O	C	Y	R	R	D
X	L	E	T	U	M	L	R	R	V	H	E	E	E
G	J	I	V	A	R	L	P	A	T	U	C	E	R
Y	C	B	Z	I	D	C	Y	C	S	H	Y	S	D
R	E	T	A	W	R	H	E	F	D	W	C	E	I
U	E	I	T	F	F	U	H	S	E	G	L	H	V
I	V	S	J	O	X	H	M	W	E	Z	E	J	Q
K	O	G	P	C	A	N	B	E	S	S	Y	I	N
I	L	E	N	E	R	G	Y	E	R	H	J	I	Q
A	I	R	V	Z	C	Y	W	F	P	Z	A	U	E
M	G	J	L	C	P	C	K	Y	E	R	K	K	T

AIR

GLOBAL

RECYCLE

SEEDS

CLIMATE

PLANTS

REDUCE

TREES

EARTH

PLASTIC

RESOURCES

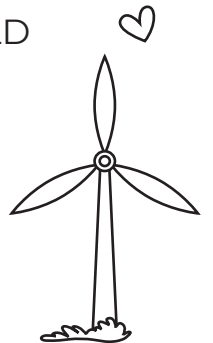
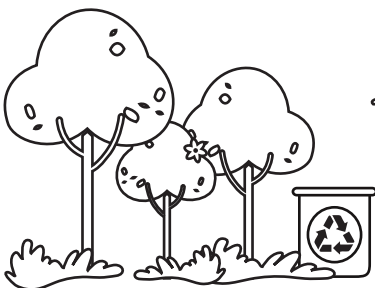
WATER

ENERGY

RAIN

RIVER

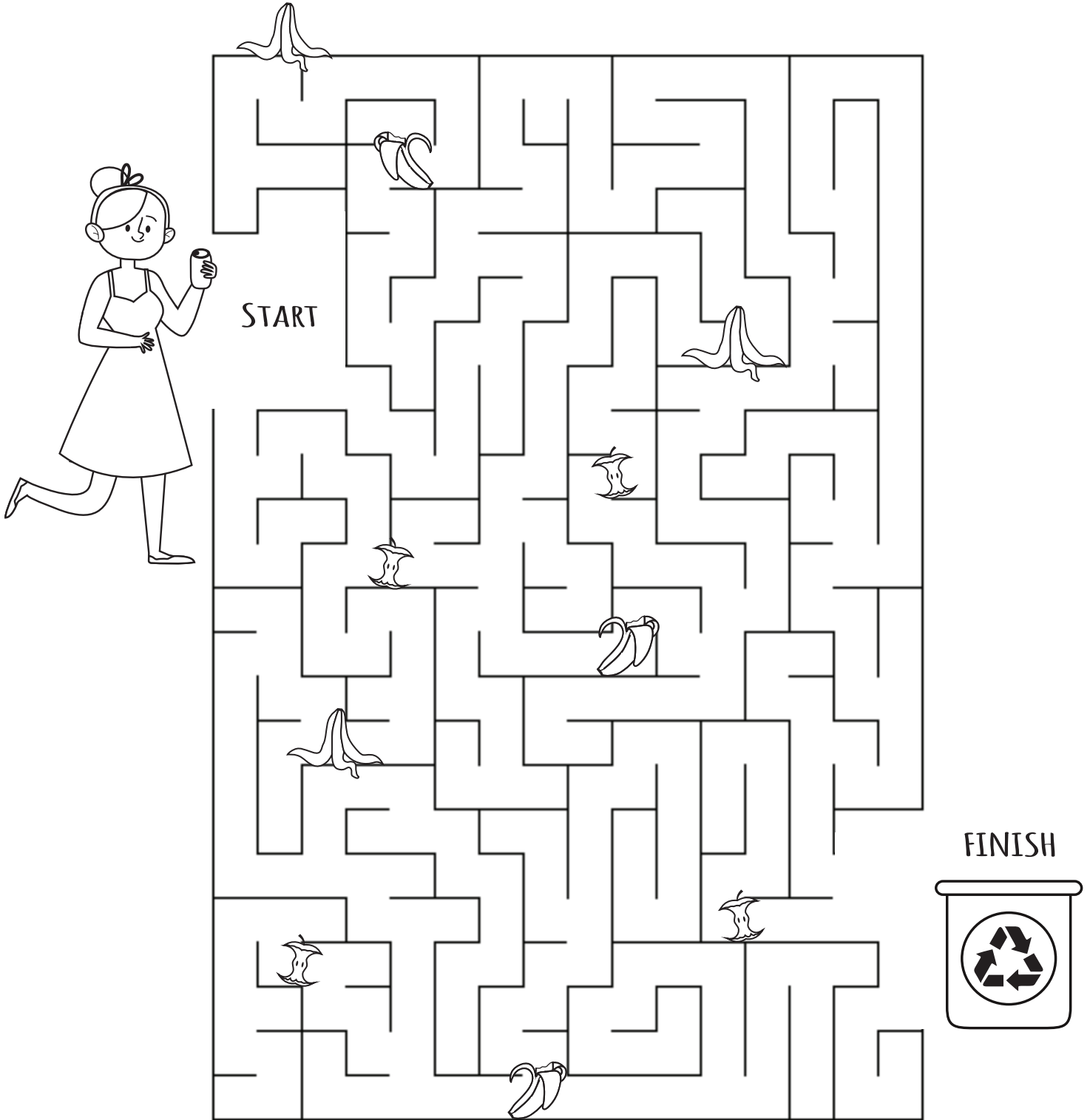
WORLD





TO THE RECYCLING BIN WE GO!

HELP THE GIRL FIND THE PATH THAT LEADS TO THE RECYCLING BIN SO SHE CAN PROPERLY THROW AWAY HER CAN!





DELICIOUS DIRT!



This easy treat celebrates all the layers of **SOIL**! We'll list the classic recipe below, as well as suggestions for variation and substitutions. If you don't have the exact ingredients, we don't want you to have to make a special trip to the store — just use your imagination!

BASIC INGREDIENTS:

- **Chocolate pudding (prepared according to directions or pre-packaged cups)**
- **Whipped cream or whipped topping**
- **Oreos or other chocolate cookie**
- **For more ingredients, see the variations at the bottom of the page**

INSTRUCTIONS:

- 1.) Crush the cookies. Any easy way to do this is with a food processor or blender. You can also put the cookies inside zip-close bags and allow children to use a small hammer or a rolling pin to crush the cookies into crumbs.
- 2.) In a small to medium sized mixing bowl, put half the prepared chocolate pudding and an equal amount of whipped topping. Then, add a few spoonfuls of crushed cookies. Gently fold together.
- 3.) Assemble your soil in small bowls or cups (clear bowls or cups are great for this).
 - a. First, create a rocky layer of a whole cookie, with larger broken pieces on top.
 - b. Then, add the pudding and whipped cream mixture.
 - c. Next, layer the chocolate pudding.
 - d. Finally, add the top layer of finely crushed cookies.
- 4.) “Decorate” your dirt garden with some of the ideas below.
- 5.) Finally, grab a spoon and enjoy your creation!

VARIATIONS AND SUBSTITUTIONS:

- You can add gummy worms to your soil or make “trees” from pretzel sticks.
- To make “rocks,” add chocolate chips or chopped candy bars. Raisins, dried fruit or chopped nuts can also be rocky layers of soil.
- Want to add grass? Toss shredded coconut with green food coloring and sprinkle on top. Sprigs of mint or other herbs can be “planted” in your soil, as well.
- No Oreos? No problem — you can crumble chocolate cake or brownies, or finely chop chocolate bars or chocolate chips.
- No chocolate pudding? Try vanilla pudding or yogurt. You can create a “sandy” soil by adding layers of honey and crumbled granola bars, crushed graham crackers or vanilla wafers.

DID YOU KNOW?

Soil has many different kinds of layers. The top layers are where crops for food are grown. It's important that we keep those layers healthy to be sure animals and people have enough to eat. Underneath are layers of soil that are hard or sandy. Beneath these layers is rock.



WANT TO LEARN MORE?



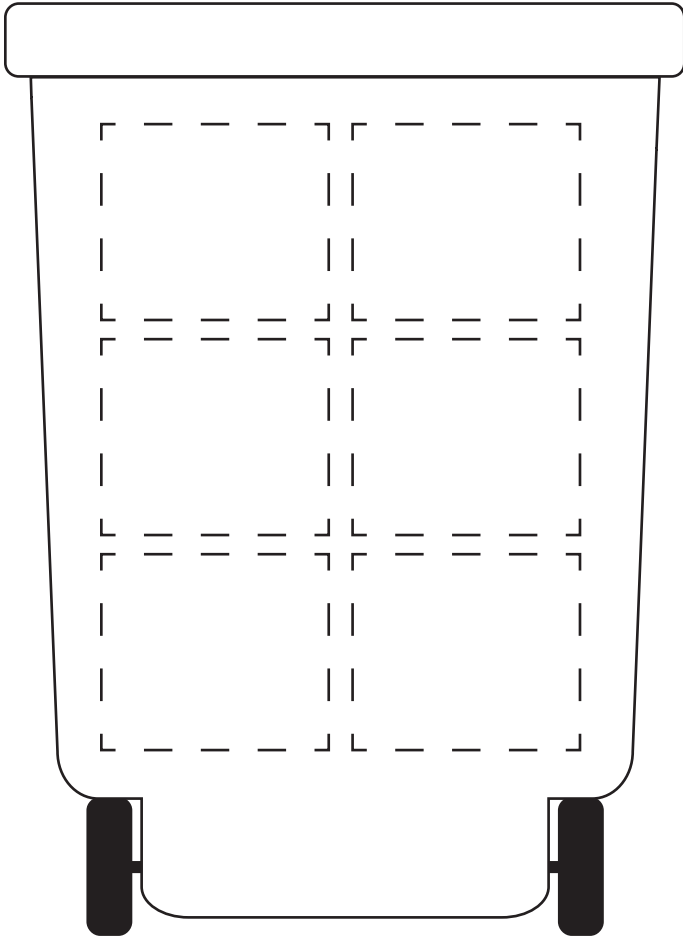
[Watch this video about soil!](#)



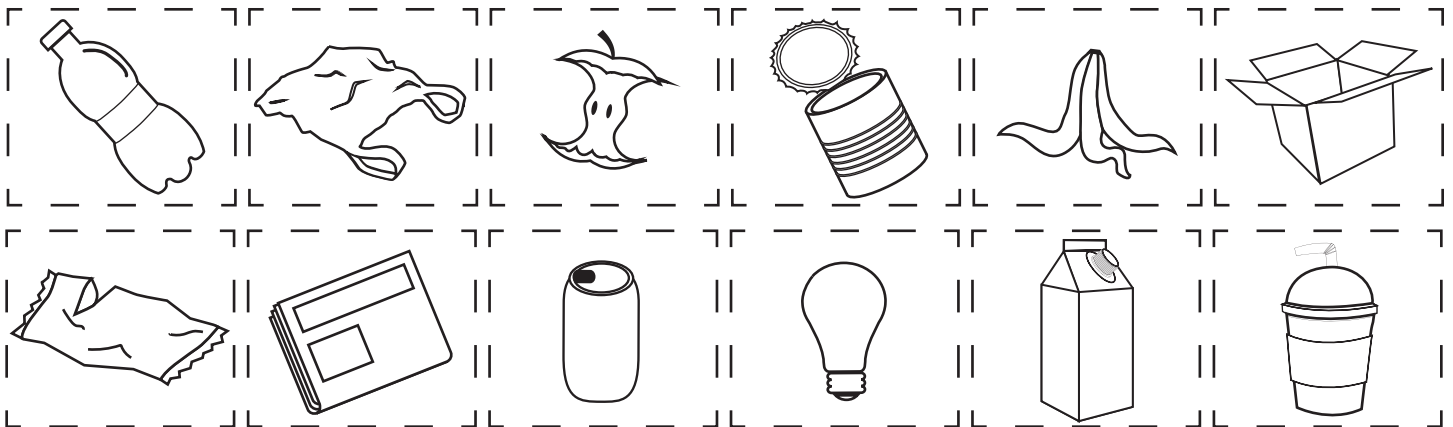
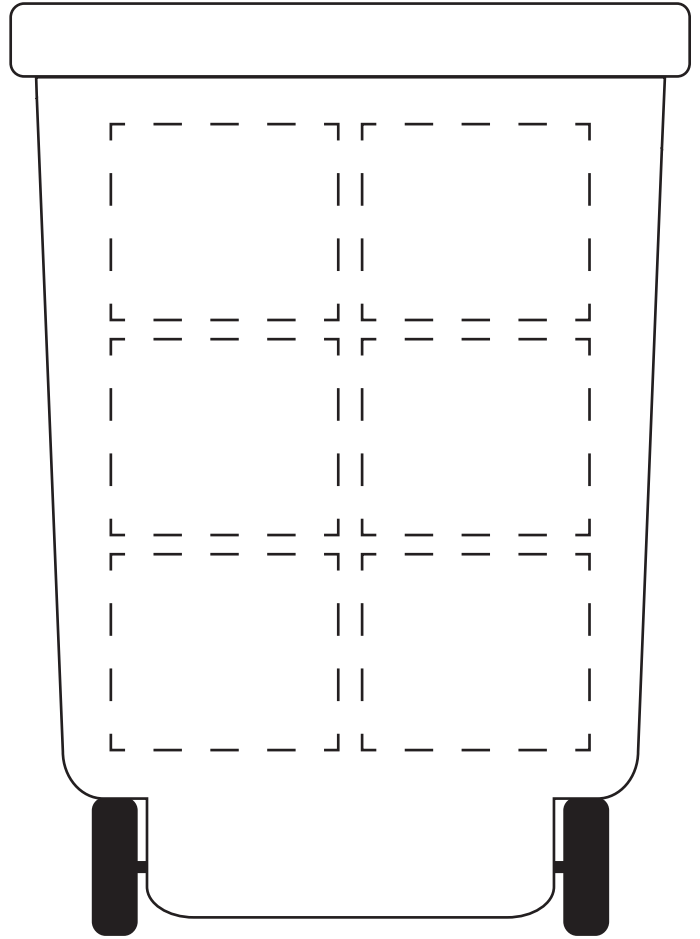
RECYCLING OR GARBAGE?

CUT OUT EACH PIECE OF TRASH ALONG THE DOTTED LINES BELOW,
THEN GLUE IT ON THE CAN WHERE IT BELONGS.

RECYCLING



GARBAGE





EARTH DAY!