

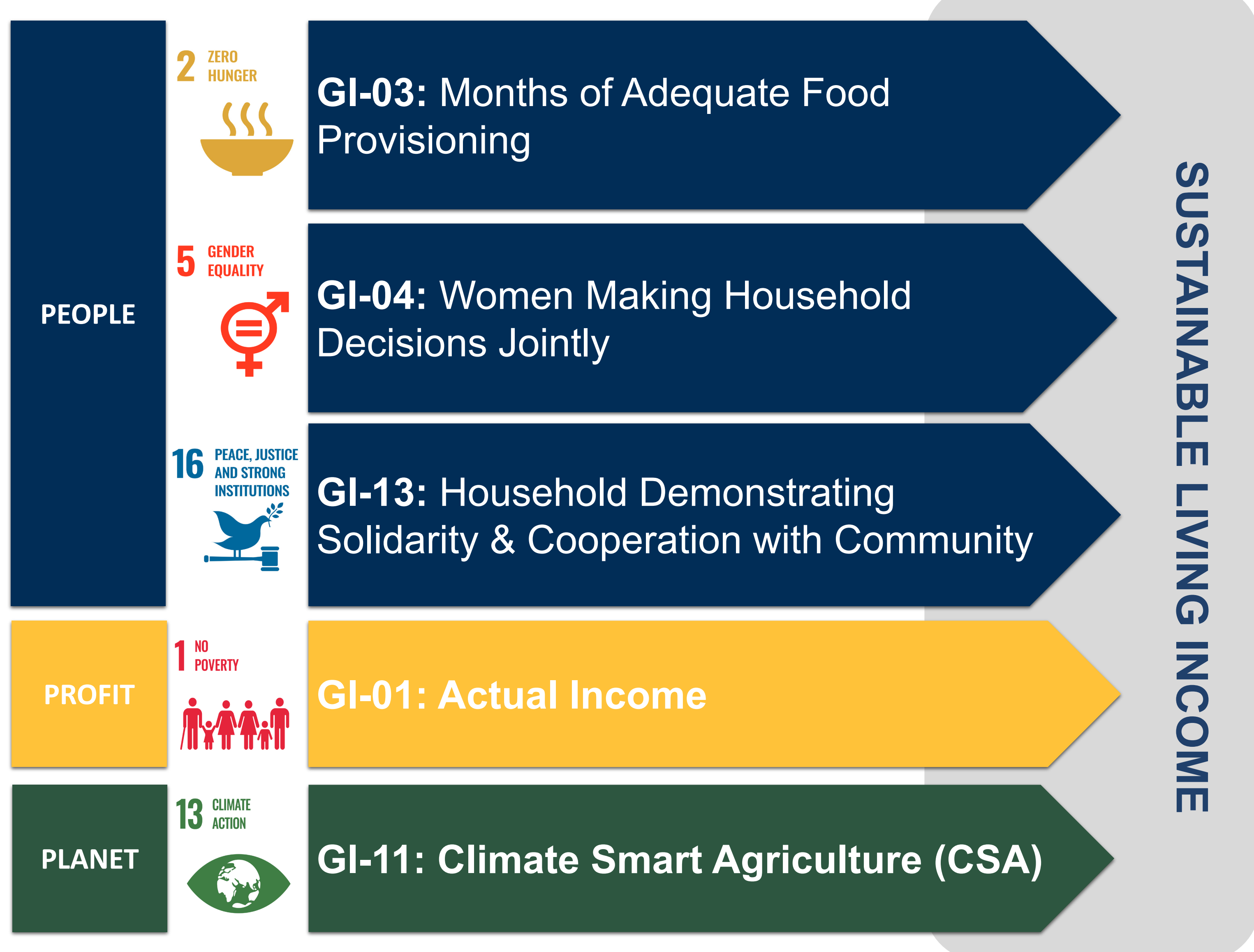
Assessing Sustainable Living Income: The Heifer Household Transformation Model

Introduction






- Heifer's Household Transformation Model is a tool that-
- Evaluates households' journey towards sustainable living income
 - Recognizes the importance of a holistic approach
 - Emphasizes three crucial dimensions: People, Profit, and Planet
 - Gauges household progress towards achieving Sustainable Living Income
 - Ensures enduring positive impacts on vulnerable households and ecosystems

Alignment with SDG

The Heifer Transformation Model is a comprehensive three-phase assessment tool and Aligned with Sustainable Development Goals (SDGs).



Domains

-  **Actual Income:** Measures the total net earnings of a household over a year, indicating movement towards surpassing the Living Income Benchmark.
-  **Months of Adequate Household Food Provisioning (MAHFP):** Reflects the number of months a household can meet its food needs adequately within a year.
-  **Women Making Household Decisions Jointly:** Evaluates women's equitable control over family income and assets, crucial for empowerment.
-  **Household adopting Climate Smart Agriculture (CSA):** Focuses on the adoption of climate-smart agricultural practices, pivotal for sustainable farming.
-  **Household Demonstrating Solidarity and Cooperation Among Community Members:** Gauges the level of trust and participation within the community, fostering collective action.

Scoring

Heifer International's Transformation Model		A	B	C	SUSTAINABLE LIVING INCOME
People	GI-03: Months of Adequate Food Provisioning	< 9 months	9 to 11 months	> 11 months	
	GI-04: Women Making Household Decisions Jointly	< 3 <small>1- No input 2- Input into very few decisions 3- Input into some</small>	3 to 4 <small>4- Input into most decisions</small>	> 4 <small>Input into all decisions</small>	
	GI-13: Household Demonstrating Solidarity and Cooperative Amongst Community Members	< 50%	50% to 75%	> 75%	
Profit	GI-01: Actual Income	< \$1.90* <small>*World Bank International Poverty Line</small>	\$1.90 to Living Income Benchmark	> Living Income Benchmark	
Planet	GI-11: Climate Smart Agriculture (CSA)	< 40%	40% to 70%	> 70%	

Conclusion

The Household Transformation Model offers a robust framework for evaluating and fostering sustainable livelihoods. By addressing multidimensional aspects of development, it paves the way for lasting impact on households, communities, and ecosystems.

Takeaways

- 1 Holistic Assessment:** Moving beyond income-centric approaches to embrace multifaceted evaluation.
- 2 Quality-of-Life Focus:** Prioritizing social and environmental well-being alongside economic stability.
- 3 SDG Alignment:** Directly contributes to multiple Sustainable Development Goals.
- 4 Empowerment Focus:** Prioritizes gender equality and community cohesion.
- 5 Long-term Impact:** Aims for sustainable outcomes beyond mere income generation.

Presenter:
Ritesh Laddha
Associate Director - MERLS
Heifer India/ Passing Gifts
ritesh.laddha@heiferindia.org